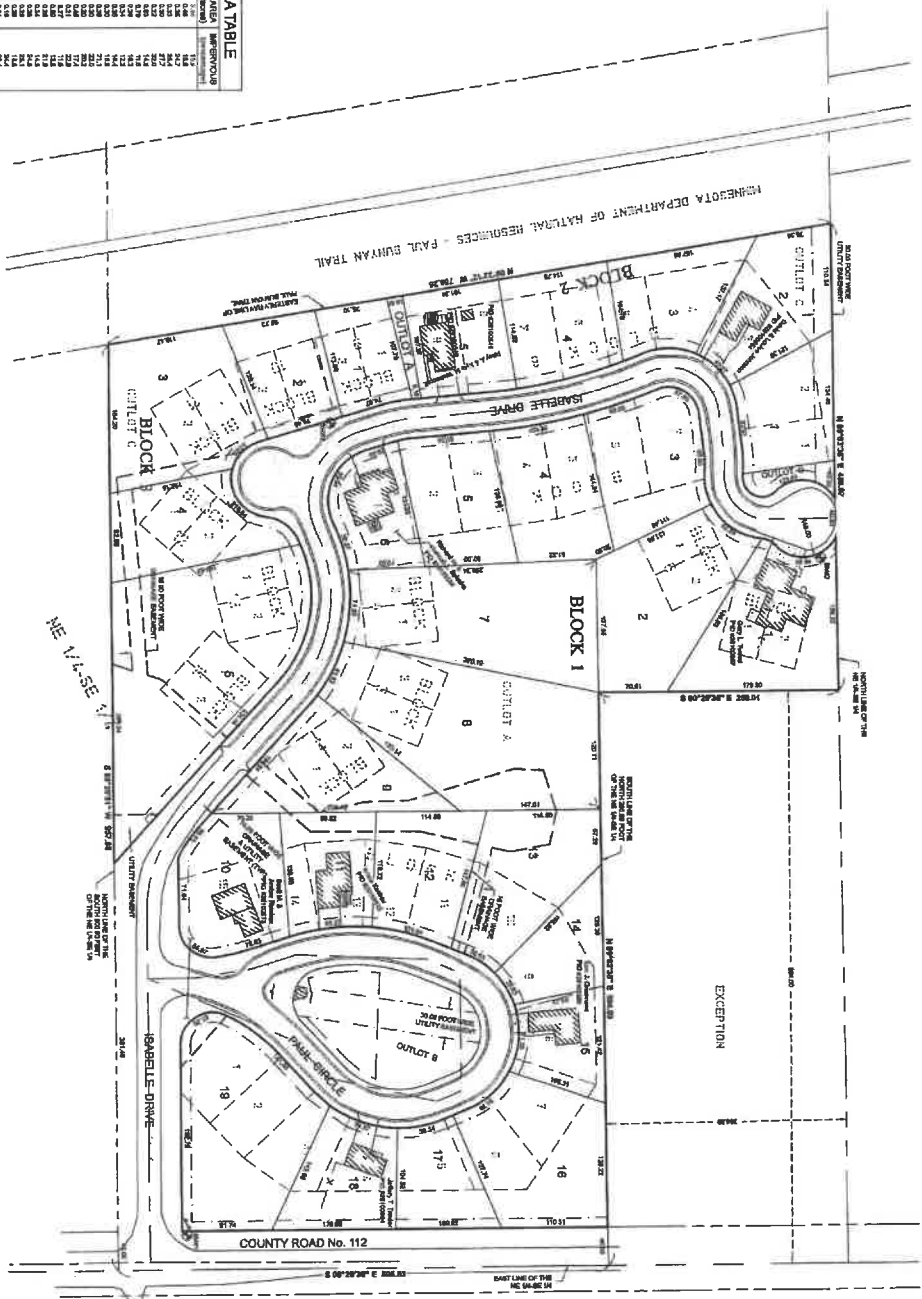
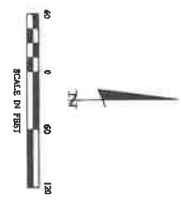


FIRST ADDITION TO TRAILSIDE ESTATES

PRELIMINARY PLAT
 PART OF TRAILSIDE ESTATES
 SECTION 10, TOWNSHIP 136 NORTH, RANGE 29 WEST
 CROW WING COUNTY, MINNESOTA



LOT	BLOCK	AREA (AC)	AREA (SQ FT)	PERCENTAGE
1	1	0.10	6933	0.10
2	1	0.10	6933	0.10
3	1	0.10	6933	0.10
4	1	0.10	6933	0.10
5	1	0.10	6933	0.10
6	1	0.10	6933	0.10
7	1	0.10	6933	0.10
8	1	0.10	6933	0.10
9	1	0.10	6933	0.10
10	1	0.10	6933	0.10
11	1	0.10	6933	0.10
12	1	0.10	6933	0.10
13	1	0.10	6933	0.10
14	1	0.10	6933	0.10
15	1	0.10	6933	0.10
16	1	0.10	6933	0.10
17	1	0.10	6933	0.10
18	1	0.10	6933	0.10
19	1	0.10	6933	0.10
20	1	0.10	6933	0.10
21	1	0.10	6933	0.10
22	1	0.10	6933	0.10
23	1	0.10	6933	0.10
24	1	0.10	6933	0.10
25	1	0.10	6933	0.10
26	1	0.10	6933	0.10
27	1	0.10	6933	0.10
28	1	0.10	6933	0.10
29	1	0.10	6933	0.10
30	1	0.10	6933	0.10
31	1	0.10	6933	0.10
32	1	0.10	6933	0.10
33	1	0.10	6933	0.10
34	1	0.10	6933	0.10
35	1	0.10	6933	0.10
36	1	0.10	6933	0.10
37	1	0.10	6933	0.10
38	1	0.10	6933	0.10
39	1	0.10	6933	0.10
40	1	0.10	6933	0.10
41	1	0.10	6933	0.10
42	1	0.10	6933	0.10
43	1	0.10	6933	0.10
44	1	0.10	6933	0.10
45	1	0.10	6933	0.10
46	1	0.10	6933	0.10
47	1	0.10	6933	0.10
48	1	0.10	6933	0.10
49	1	0.10	6933	0.10
50	1	0.10	6933	0.10
51	1	0.10	6933	0.10
52	1	0.10	6933	0.10
53	1	0.10	6933	0.10
54	1	0.10	6933	0.10
55	1	0.10	6933	0.10
56	1	0.10	6933	0.10
57	1	0.10	6933	0.10
58	1	0.10	6933	0.10
59	1	0.10	6933	0.10
60	1	0.10	6933	0.10
61	1	0.10	6933	0.10
62	1	0.10	6933	0.10
63	1	0.10	6933	0.10
64	1	0.10	6933	0.10
65	1	0.10	6933	0.10
66	1	0.10	6933	0.10
67	1	0.10	6933	0.10
68	1	0.10	6933	0.10
69	1	0.10	6933	0.10
70	1	0.10	6933	0.10
71	1	0.10	6933	0.10
72	1	0.10	6933	0.10
73	1	0.10	6933	0.10
74	1	0.10	6933	0.10
75	1	0.10	6933	0.10
76	1	0.10	6933	0.10
77	1	0.10	6933	0.10
78	1	0.10	6933	0.10
79	1	0.10	6933	0.10
80	1	0.10	6933	0.10
81	1	0.10	6933	0.10
82	1	0.10	6933	0.10
83	1	0.10	6933	0.10
84	1	0.10	6933	0.10
85	1	0.10	6933	0.10
86	1	0.10	6933	0.10
87	1	0.10	6933	0.10
88	1	0.10	6933	0.10
89	1	0.10	6933	0.10
90	1	0.10	6933	0.10
91	1	0.10	6933	0.10
92	1	0.10	6933	0.10
93	1	0.10	6933	0.10
94	1	0.10	6933	0.10
95	1	0.10	6933	0.10
96	1	0.10	6933	0.10
97	1	0.10	6933	0.10
98	1	0.10	6933	0.10
99	1	0.10	6933	0.10
100	1	0.10	6933	0.10



- NOTES:**
- The areas shown and described herein shall be subject to all applicable laws, ordinances, rules, regulations, and orders of the Minnesota State Board of Building Standards and Code Enforcement, and all other applicable laws, ordinances, rules, regulations, and orders.
 - CONTRACTOR SHALL BE RESPONSIBLE FOR OBTAINING ALL NECESSARY PERMITS AND APPROVALS FROM THE MINNESOTA STATE BOARD OF BUILDING STANDARDS AND CODE ENFORCEMENT.
 - The information contained herein is subject to change without notice and is not intended to constitute an offer of any financial product or service.

LEGEND

---	PROPERTY BOUNDARIES
---	EXISTING LOT LINES
---	PROPOSED LOT LINES
---	PROPOSED DRIVEWAYS
---	PROPOSED SIDEWALKS
---	PROPOSED UTILITY LINES
---	PROPOSED EXCAVATION
---	PROPOSED ELEVATION
---	PROPOSED EXCAVATION
---	PROPOSED EXCAVATION

2 of 2	PRELIMINARY PLAT FIRST ADDITION TO TRAILSIDE ESTATES Thomas Johnson P.O. Box 303 Brainerd, MN 56401	PROJECT: 14820-1 FILE NAME: PL14820-1.dwg FILED BOOK: 2008 NA PL NA DATE: 04-22-08 SCALE: 1"=40' DATE: 04-22-08 DESCRIPTION:	REVIEWED BY:	APPROVED BY:	30286 Rembrandt Road Suite 1 P.O. Box 374 Rapid City, MN 56722 605-798-4949 www.thomsonblaw.com
	I HEREBY CERTIFY THAT THE INFORMATION CONTAINED HEREIN IS TRUE AND CORRECT TO THE BEST OF MY KNOWLEDGE AND BELIEF.				